

TIKKO TONI & THE CORKODILE



OUR HEROS

TIKKO

Tikko's real name is Tikkowango Bobokofinungo. He is a cheery little elephant driven by his endless curiosity. "Oh my tooty tooty trunk!" cries Tikko if he discovers something, whether a sticky flower, prickly pig or colorful cave - anything that Tikko hasn't encountered before sparks his enthusiasm and burning desire to investigate it.

Tikko doesn't just want to see, hear and know, he wants to touch, experience, and try things out - immediately! So he pokes his trunk into everything with the outcome of always ending up in exciting situations.



TONI

The best rhino beetle explorer of all time: clever, brave and ready for any adventure, any time! Toni may be a bit of a show-off, but he's also a wannabe problem solver,



which often comes in handy to get his friends out of sticky situations. Still, sometimes he gets so excited and starts to speak faster than he can think, mixing up his wetters and lords, erm, words and letters...

CORK

Cork is a corko..., oops, a crocodile. He may look mighty dangerous but actually he's a real scaredy-cat. If Cork encounters something new, he would prefer to steer clear of it - afterall, you never know what kind of danger he could get into! Luckily, Cork is really strong and this helps him to free himself and his friends from whatever tight squeeze they might be in.



IN A NUTSHELL:

Format: Animated series
Target audience: Preschool children 3 -5 years
Length: 26 episodes of 5 minutes each
Animation style: 2D digital
Setting: Island world

STORY & PHILOSOPHY

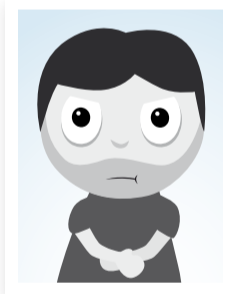
"Oh, my tooty-tooty trunk, what is THAT!?"

Whoever travels around gets to know the world, and those who are curious, even more so. Tikko, the little elephant who sticks his trunk into anything he doesn't know is searching for adventure. The numerous little islands circling his home island, Pumi Lumi, offer exactly the right environment for our little world explorer! Luckily, Tikko doesn't have to travel alone. His friends, Toni, the super smart rhino beetle, and Cork, the scaredy-cat crocodile are always by his side. And with such good friends around, Tikko doesn't need to be afraid of anything!

With this series elevision would like to encourage young viewers to learn and grow through the means of imaginative exploration and support the journey of a preschooler's developing emotional intelligence. Each episode will present a new adventure, a new island to be discovered where first-time physical and social encounters, problem-solving and fun are intertwined. The character Tikko parallels his young viewers with their own every-day encounters. Just as children often do, Tikko sets out into the unknown brimming with curiosity, making the world his own by investigating and experiencing it. Through the dynamics of the special friendship the three characters have, children will not only learn how to 'manage' conflicts and difference in a positive manner, but also continue to nurture their developmental journeys with a healthy portion of curiosity and experimental interaction.

An animated adventure series for children aged 3 to 5, and for all who are just that little bit curious...

THE CREATIVE TEAM

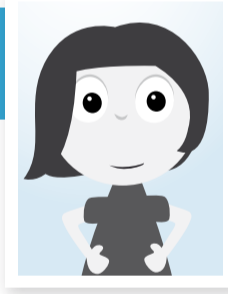


EXECUTIVE PRODUCER ATHANASIOS PAPAPOSTOLOU

Athanasios is the founder and Managing Director of elevision. He has worked as Creative Director for the advertising agencies BBDO Athens and Büro Akut Cologne and has produced numerous animated advertising films throughout his career for companies such as Vodafone, Media Markt, German Wings, among others.

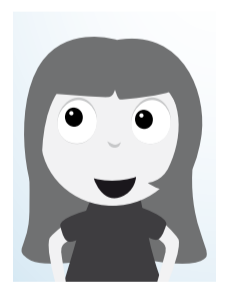
DIRECTOR / EDITOR NIK KERN

Nik has been Cartoon Director at elevision since 2007. She is a video artist and photographer and holds diplomas in audio-visual media from both the Ecole des Beaux-Arts Montpellier and the Academy of Media Arts Cologne. For the WDR she has produced a number of features for the preschool series 'Sendung mit den Elefanten' which is broadcast on KI.KA.

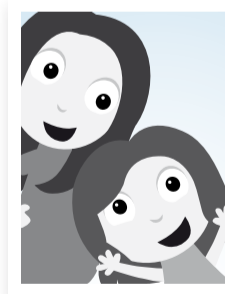


CREATIVE PRODUCER JENNIFER JONES

Jennifer is a cultural manager, film curator and musician and has been with elevision since 2009. She has over 10 years of directorial experience in the film industry with international festivals and projects such as The International Women's Film Festival, Cologne, the MEDIA pilot project, 'Europe's Finest', The International Short Film Festival Oberhausen and the goEast Festival of Central and Eastern European Film.



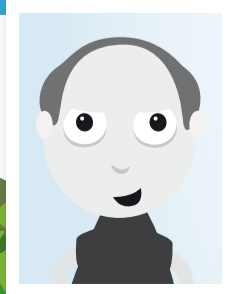
THE WRITERS ANJA FLADE & SIMONE HOEFT



Anja is a screenwriter and film director (Academy for Film and Television, 'Konrad Wolf' Babelsberg) who has written award-winning children's screenplays such as 'Flachschwimmer' (ZDF) and the children's project 'Jump for Life' which won the MDM award.

Simone has been working in animation and children's series development for over 10 years. Her writing credits include 'Die Sendung mit der Maus' (since 1997), 'Wissen macht Ah!', 'Die Sendung mit dem Elefanten', (WDR), 'Lenny and Tweek', 'Koffergeschichten', Siebenstein (ZDF). She has also written synchronisations for 'Mira & Marie', 'Peppa Pig', 'Wenn das Leben geht' and 'Mongolian Ping Pong' (WDR).

SUPERVISING PRODUCER JOHANN FRANK



Johann has been working in the film business as a stage manager and financial advisor for over ten years. Currently he is producing stop motion films and serves as a financial and production consultant for animated films.

ELEVISION

Founded in 2007 in Cologne, elevision is a young animation studio with an experienced and creative team of animators, film directors, editors, software developers and multi-media specialists. The team has a long history of services in the fields of 2D animation, commercial and advertising production, design visualization as well as trend-setting formats such as internet and mobile TV and podcasts. Tikko, Toni & the Corkodile is the elevision's first animated series production.



Berrenrather Straße 188a
D-50937 Cologne
Germany

contact: jennifer jones
jj@elevision-film.com
www.elevision-film.com

tel +49.(0)221 277 80 173
fax +49.(0)221 277 11 077





TIKKO TOMI & THE CORKODILE